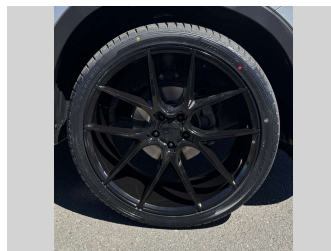
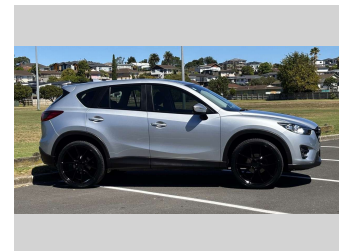



2015 Mazda CX-5 GSX, 4X4, 2.5L PETROL



Purchase Price **\$23,975**
Includes GST, Registration & Licensing

Finance may be available on this vehicle. Ask one of our friendly staff for more information.



Gain peace of mind with Mechanical Breakdown Insurance. **Ask us how.**



Top features

None Listed

Body Style
5 door, SUV

Odometer
109,928 km

Engine
2488 cc, In-Line

Fuel Type
Petrol


Transmission
Automatic, 4WD

Wheels
-

VIN
JM0KE103200323349

Interior
Charcoal

Safety



Based on 2024 UCSR rating for 12-17 models

Reg No.
NCW337

Ext Colour
Silver

History
NZ New

Seats
5 seats, Deluxe cloth

CO2 Emissions
★★★★☆
191 grams/km

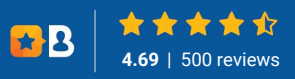
Energy Economy
★★☆☆☆
Annual fuel cost of \$3,210
8.2L per 100km

Cost per year is an estimate based on petrol price of \$2.80 per litre and an average distance of 14000 km. Emissions and Energy Economy figures standardised to 3P WLTP.

Stock ID: 35107



Pearce Brothers | Phone 0800 080 061 | Email adam@pearcebrothers.co.nz
103 Great South Road, Papatoetoe, Auckland 2113, New Zealand
www.pearcebrothers.co.nz



4.69 | 500 reviews