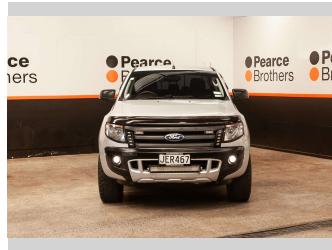
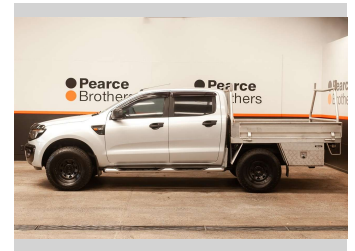
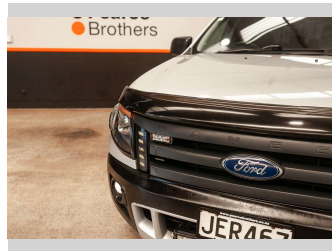
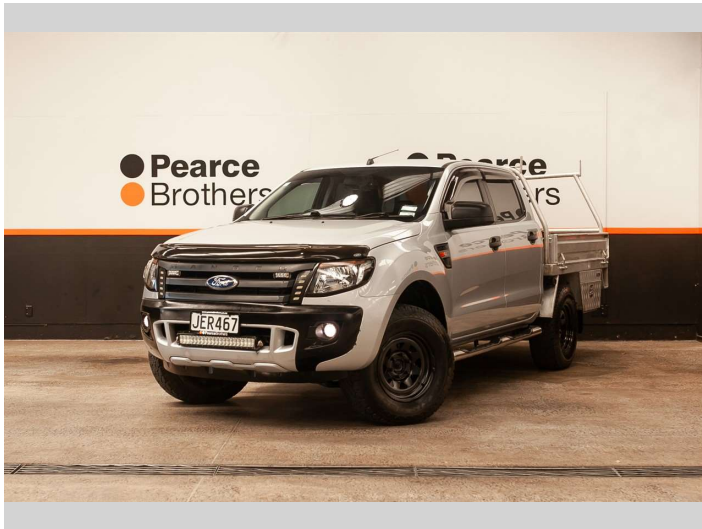


2015 Ford Ranger XL, 4X4, FLATDECK, STEELIES



Purchase Price **\$22,990**
Includes GST, Registration & Licensing

Finance may be available on this vehicle. Ask one of our friendly staff for more information.



Gain peace of mind with Mechanical Breakdown Insurance. **Ask us how.**



- Top features**
- » 4WD
 - » 4WD/4x4
 - » Adjustable 4X4
 - » Air Bag(s)
 - » Air Conditioning
 - » Alloys
 - » Alloys
 - » Bluetooth
 - » Car Stereo
 - » Central Locking
 - » Central Locking
 - » Climate Control
 - » Cruise Control
 - » Cruise Control
 - » Diff-lock
 - » Electric Mirrors
 - » Electric Mirrors
 - » Electric Windows

Body Style
4 door, Ute

Odometer
206,816 km

Engine
3199 cc, Internal Combustion

Fuel Type
Diesel

Transmission
MANUAL

Wheels
-

VIN
MNAUMEF50FW448392

Interior
-

Safety
-

Reg No.
JER467

Ext Colour
Silver

History
NZ New

Seats
5 seats

CO2 Emissions
-

Energy Economy
-

Stock ID: 27780



Pearce Brothers | Phone 09 250 1987 | Email joel@pearcebrothers.co.nz
155 Cavendish Drive, Manukau, Auckland 2104, New Zealand
www.pearcebrothers.co.nz