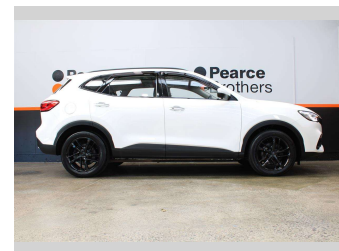
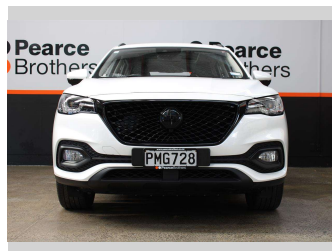



# 2022 MG Hs PHEV 10HD LEATHER NZ NEW



**Purchase Price** **\$26,990**  
Includes GST, Registration & Licensing

Finance may be available on this vehicle. Ask one of our friendly staff for more information.



Gain peace of mind with Mechanical Breakdown Insurance. **Ask us how.**



- Top features**
- » Air Bag(s)
  - » Air Conditioning
  - » Alloys
  - » Bluetooth
  - » Car Stereo
  - » Central Locking
  - » Central Locking
  - » Cruise Control
  - » Cruise Control
  - » Electric Mirrors
  - » Electric Mirrors
  - » Electric Windows
  - » Fog Lights
  - » Keyless Entry
  - » Leather Seats
  - » Power Steering
  - » Push Button Start
  - » Remote Locking

Body Style  
**5 door, Wagon**

Odometer  
**51,259 km**

Engine  
**1490 cc, Plug-In Hybrid**

Fuel Type  
**Plug-in hybrid**

Transmission  
**Automatic**

Wheels  
-

VIN  
**LSJA24392NN120746**

Interior  
-

Safety  
-

Reg No.  
**PMG728**

Ext Colour  
**White**

History  
**NZ New**

Seats  
**5 seats**

CO2 Emissions  
-

Energy Economy  
-

**Stock ID: 25943**



Pearce Brothers | Phone 09 279 2479 | Email [daniel@pearcebrothers.co.nz](mailto:daniel@pearcebrothers.co.nz)  
579 Great South Road, Manukau, Auckland 2025, New Zealand  
[www.pearcebrothers.co.nz](http://www.pearcebrothers.co.nz)