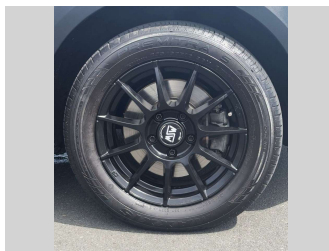
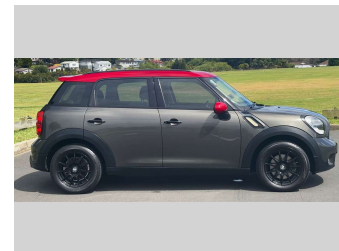


# 2012 Mini Countryman Cooper S



**Purchase Price** **\$14,975**  
Includes GST, Registration & Licensing

Finance may be available on this vehicle. Ask one of our friendly staff for more information.



Gain peace of mind with Mechanical Breakdown Insurance. **Ask us how.**



**Top features**

None Listed

Body Style  
**5 door, Hatchback**

Odometer  
**88,752 km**

Engine  
**1590 cc, In-Line**

Fuel Type  
**Petrol**

Transmission  
**Automatic**

Wheels  
-

VIN  
**WMWZC32060WN00946**

Interior  
-

Safety



Based on 2024 VSRR rating

Reg No.  
**PUD297**

Ext Colour  
**Grey**

History  
**Ex-Overseas**

Seats  
**5 seats**

CO2 Emissions  
**★★★★☆**  
**186 grams/km**

Energy Economy  
**★★☆☆☆☆**

**Annual fuel cost of \$3,100**  
**7.9L per 100km**

Cost per year is an estimate based on petrol price of \$2.80 per litre and an average distance of 14000 km. Emissions and Energy Economy figures standardised to 3P WLTP.

**Stock ID: 34522**