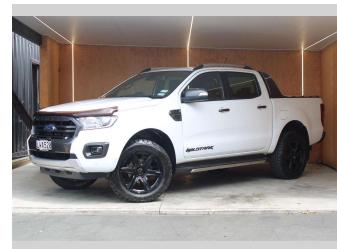



# 2018 Ford Ranger WILDTRAK 2.0L BI TURBO 4X4



**Purchase Price** **\$42,990**  
Includes GST, Registration & Licensing

Finance may be available on this vehicle. Ask one of our friendly staff for more information.

Gain peace of mind with Mechanical Breakdown Insurance. **Ask us how.**



**Top features**  
None Listed

Body Style  
**4 door, Ute**

Odometer  
**64,281 km**

Engine  
**1996 cc, Internal Combustion**


Fuel Type  
**Diesel**

Transmission  
**Automatic, 4WD**

Wheels  
-

VIN  
**MPBUMFF60JX196858**

Interior  
-

Safety  
  
Based on 2023 VSRR rating

Reg No.  
**LWA520**

Ext Colour  
**White**

History  
**NZ New**

Seats  
**5 seats**

CO2 Emissions  
**★★★☆☆☆**  
**225 grams/km**

Energy Economy  
**★★☆☆☆☆**  
**Annual fuel cost of \$3,440**  
**8.5L per 100km**

Cost per year is an estimate based on diesel price of \$2.00 per litre and an average distance of 14000 km. Includes Road User Charges (RUC). Emissions and Energy Economy figures standardised to 3P WLTP.

**Stock ID: 27289**