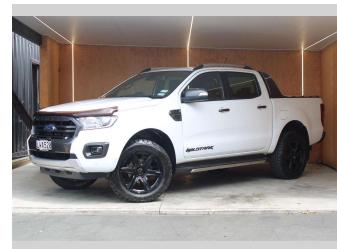



2018 Ford Ranger WILDTRAK 2.0L BI TURBO 4X4



Purchase Price **\$41,990**
Includes GST, Registration & Licensing

Finance may be available on this vehicle. Ask one of our friendly staff for more information.

Gain peace of mind with Mechanical Breakdown Insurance. **Ask us how.**



Top features

- » 4WD
- » 4WD/4x4

Body Style
4 door, Ute

Odometer
64,281 km

Engine
1996 cc, Internal Combustion

Fuel Type
Diesel


Transmission
Automatic, 4WD

Wheels
-

VIN
MPBUMFF60JX196858

Interior
-

Safety



Based on 2023 VSRR rating

Reg No.
LWA520

Ext Colour
White

History
NZ New

Seats
5 seats

CO2 Emissions
★★★★☆☆
225 grams/km

Energy Economy
★★★★☆☆
Annual fuel cost of \$3,440
8.5L per 100km

Cost per year is an estimate based on diesel price of \$2.00 per litre and an average distance of 14000 km. Includes Road User Charges (RUC). Emissions and Energy Economy figures standardised to 3P WLTP.

Stock ID: 27289