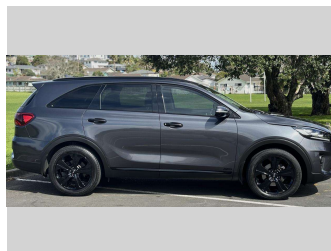


2019 Kia Sorento LTD 2.2TD 4WD



Purchase Price **\$30,975**
Includes GST, Registration & Licensing

Finance may be available on this vehicle. Ask one of our friendly staff for more information.



Gain peace of mind with Mechanical Breakdown Insurance. **Ask us how.**



Top features
None Listed

Body Style
5 door, SUV

Odometer
139,048 km

Engine
2199 cc, In-Line


Fuel Type
Diesel

Transmission
Automatic, 4WD

Wheels
-

VIN
KNAPHX1BSXX50XXXX

Interior
-

Safety

Based on 2017 ANCAP rating for 17-20 models with dual frontal+side+head airbags

Reg No.
-

Ext Colour
Grey

History
NZ New

Seats
7 seats

CO2 Emissions
★ ★ ★ ★ ☆ ☆ ☆
198 grams/km

Energy Economy
★ ★ ☆ ☆ ☆ ☆ ☆
Annual fuel cost of \$3,160
7.5L per 100km

Cost per year is an estimate based on diesel price of \$2.00 per litre and an average distance of 14000 km. Includes Road User Charges (RUC). Emissions and Energy Economy figures standardised to 3P WLTP.

Stock ID: 33467



Pearce Brothers | Phone 0800 080 061 | Email adam@pearcebrothers.co.nz
103 Great South Road, Papatoetoe, Auckland 2113, New Zealand
www.pearcebrothers.co.nz

