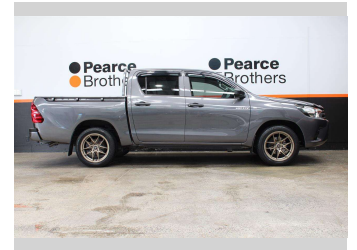
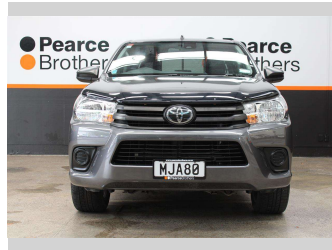
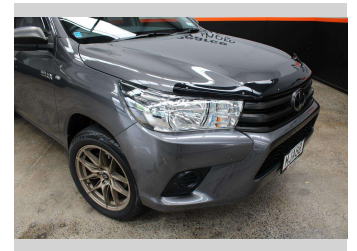
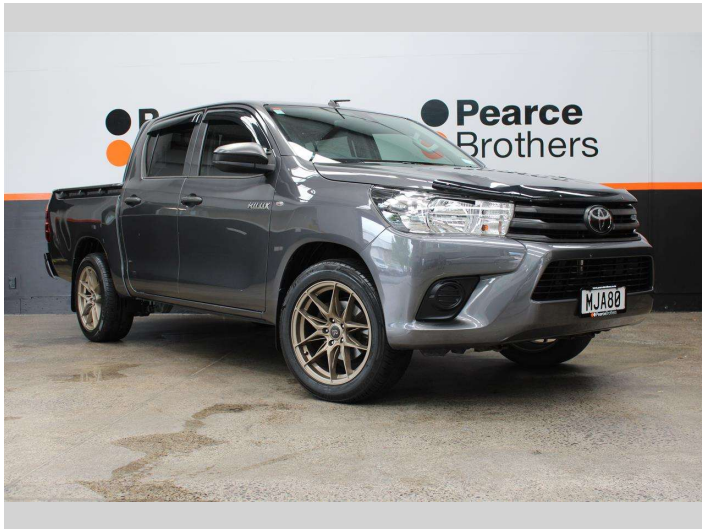



# 2019 Toyota Hilux WORKMATE 2.7P 18" MAGS




**Purchase Price** **\$26,990**  
Includes GST, Registration & Licensing

Finance may be available on this vehicle. Ask one of our friendly staff for more information.



UDC  
New Zealand's Finance Company  
MARAC  
MEANS FINANCE

Gain peace of mind with Mechanical Breakdown Insurance. **Ask us how.**



autosure  
INSURANCE

- Top features**
- » Air Bag(s)
  - » Air Conditioning
  - » Alloys
  - » Bluetooth
  - » Car Stereo
  - » Central Locking
  - » Central Locking
  - » Cruise Control
  - » Cruise Control
  - » Electric Mirrors
  - » Electric Windows
  - » Power Steering
  - » Remote Locking
  - » Reverse Camera
  - » Tinted Windows
  - » Towbar

Body Style  
**4 door, Ute**

Odometer  
**71,344 km**

Engine  
**2694 cc, Internal Combustion**

Fuel Type  
**Petrol**

Transmission  
**Automatic**

Wheels  
-

VIN  
**MR0EX3CDX01380719**

Interior  
-

Safety  
-

Reg No.  
**MJA80**

Ext Colour  
**Grey**

History  
**NZ New**

Seats  
**5 seats**

CO2 Emissions  
-

Energy Economy  
-

**Stock ID: 27917**



Pearce Brothers | Phone 09 279 2479 | Email daniel@pearcebrothers.co.nz  
579 Great South Road, Manukau, Auckland 2025, New Zealand  
www.pearcebrothers.co.nz