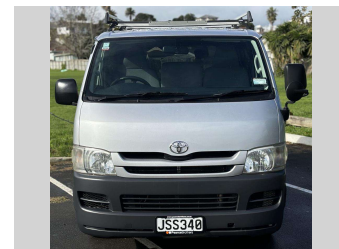
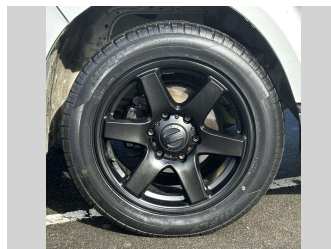


# 2009 Toyota Hiace 2.0 PETROL 5 DOOR



**Purchase Price** **\$17,975**  
Includes GST, Registration & Licensing

Finance may be available on this vehicle. Ask one of our friendly staff for more information.



Gain peace of mind with Mechanical Breakdown Insurance. **Ask us how.**



**Top features**

None Listed

**Body Style**  
5 door, Van

**Odometer**  
219,191 km

**Engine**  
1998 cc, In-Line

**Fuel Type**  
Petrol


**Transmission**  
Automatic, Rear Wheel

**Wheels**  
-

**VIN**  
7AT0H60FX16094804

**Interior**  
-

**Safety**



Based on 2023 UCSR rating for 05-19 models

**Reg No.**  
JSS340

**Ext Colour**  
Silver

**History**  
Ex-Overseas

**Seats**  
3 seats

**CO2 Emissions**  
★ ★ ☆ ☆ ☆ ☆  
241 grams/km

**Energy Economy**  
★ ☆ ☆ ☆ ☆ ☆  
Annual fuel cost of \$4,040  
10.3L per 100km

Cost per year is an estimate based on petrol price of \$2.80 per litre and an average distance of 14000 km. Emissions and Energy Economy figures standardised to 3P WLTP.

**Stock ID: 32862**