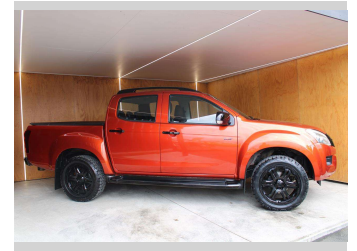



2016 Isuzu D-Max LS-T DC 3.0D/5AT/UT



Purchase Price
Includes GST, Registration & Licensing


\$24,990

Finance may be available on this vehicle. Ask one of our friendly staff for more information.



UDC
New Zealand's Finance Company
MARAC
MEANS FINANCE

Gain peace of mind with Mechanical Breakdown Insurance. **Ask us how.**



autosure
INSURANCE

Top features

None Listed

Body Style
4 door, Ute

Odometer
167,208 km

Engine
2999 cc, Internal Combustion

Fuel Type
Diesel


Transmission
Automatic

Wheels
-

VIN
MPATFR85JFT004148

Interior
-

Safety



3 star
safety rating

Based on 2023 VSRR rating

Reg No.
JRZ229

Ext Colour
Red

History
NZ New

Seats
5 seats

CO2 Emissions
★★★★☆☆
244 grams/km

Energy Economy
★★★★☆☆
Annual fuel cost of \$3,670
9.3L per 100km

Cost per year is an estimate based on diesel price of \$2.00 per litre and an average distance of 14000 km. Includes Road User Charges (RUC). Emissions and Energy Economy figures standardised to 3P WLTP.

Stock ID: 27327