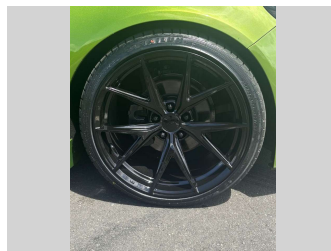
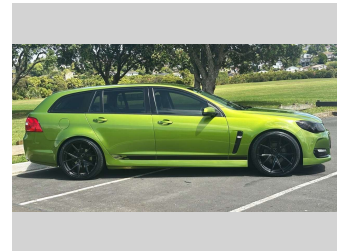
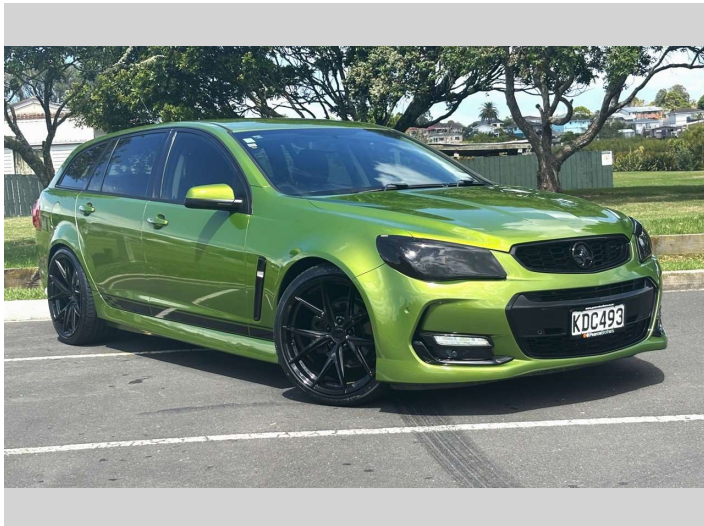


2016 Holden Commodore VF2 SV6 WAGON



Purchase Price **\$27,975**
Includes GST, Registration & Licensing

Finance may be available on this vehicle. Ask one of our friendly staff for more information.



Gain peace of mind with Mechanical Breakdown Insurance. **Ask us how.**



Top features

None Listed

Body Style
5 door, Station Wagon

Odometer
136,736 km

Engine
3564 cc, In-Line


Fuel Type
Petrol

Transmission
Automatic, Rear Wheel

Wheels
-

VIN
6G1XXXE3XGX2406XX

Interior
-

Safety

Based on 2024 UCSR rating for 13-17 models

Reg No.
-

Ext Colour
Green

History
NZ New

Seats
5 seats

CO2 Emissions
★ ★ ☆ ☆ ☆ ☆
247 grams/km

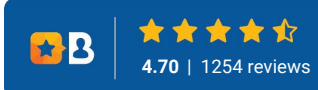
Energy Economy
★ ☆ ☆ ☆ ☆ ☆
Annual fuel cost of \$4,080
10.4L per 100km

Cost per year is an estimate based on petrol price of \$2.80 per litre and an average distance of 14000 km. Emissions and Energy Economy figures standardised to 3P WLTP.

Stock ID: 35096



Pearce Brothers | Phone 09 2777 335 | Email natalia@pearcebrothers.co.nz
122 Great South Road, Papatoetoe, Auckland 2025, New Zealand
www.pearcebrothers.co.nz



4.70 | 1254 reviews