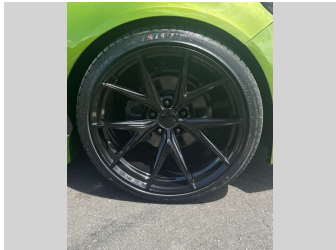
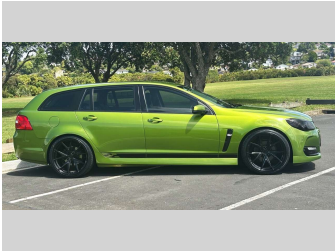
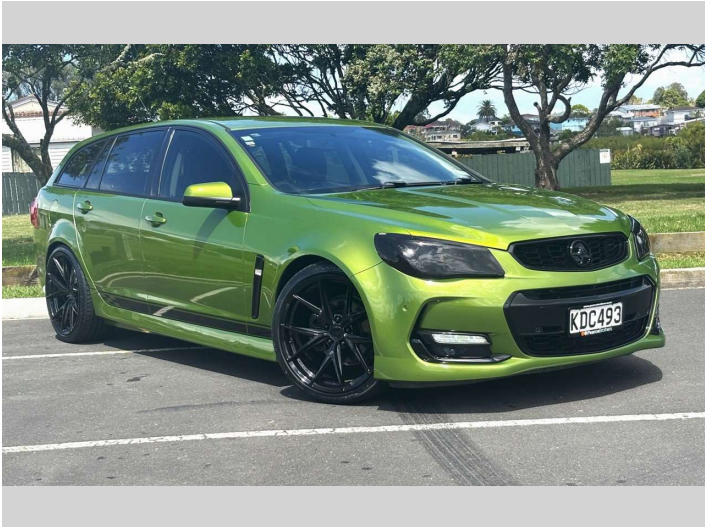


2016 Holden Commodore VF2 SV6 WAGON



Purchase Price

\$27,975

Includes GST, Registration & Licensing

Finance may be available on this vehicle. Ask one of our friendly staff for more information.



Gain peace of mind with Mechanical Breakdown Insurance. **Ask us how.**



Top features

None Listed

Body Style

5 door, Station Wagon

Odometer

136,736 km

Engine

3564 cc, In-Line

Fuel Type

Petrol

Transmission

Automatic, Rear Wheel

Wheels

-

VIN

6G1FB8E3XGL240649

Interior

-

Safety



Based on 2024 UCSR rating for 13-17 models

Reg No.

KDC493

Ext Colour

Green

History

NZ New

Seats

5 seats

CO2 Emissions

★ ★ ☆ ☆ ☆ ☆

247 grams/km

Energy Economy

★ ☆ ☆ ☆ ☆ ☆

Annual fuel cost of \$4,080

10.4L per 100km

Cost per year is an estimate based on petrol price of \$2.80 per litre and an average distance of 14000 km. Emissions and Energy Economy figures standardised to 3P WLTP.

Stock ID: 35096



Pearce Brothers | Phone 09 2777 335 | Email natalia@pearcebrothers.co.nz
122 Great South Road, Papatoetoe, Auckland 2025, New Zealand
www.pearcebrothers.co.nz

