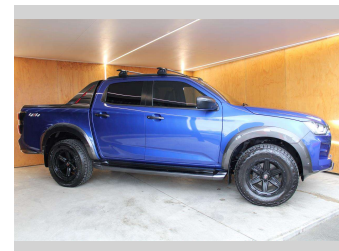
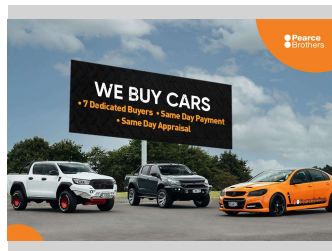


2021 Isuzu D-Max X-TERRAIN 4X4 3.0TD AUTO



Purchase Price
Includes GST, Registration & Licensing

\$47,990

Finance may be available on this vehicle. Ask one of our friendly staff for more information.



Gain peace of mind with Mechanical Breakdown Insurance. **Ask us how.**



Top features

None Listed

Body Style
4 door, Ute

Odometer
58,190 km

Engine
2999 cc, Internal Combustion

Fuel Type
Diesel


Transmission
Automatic, 4WD

Wheels
-

VIN
MPATFS40JMT012909

Interior
-

Safety



Based on 2020 ANCAP rating for 20-22 models

Reg No.
NPF522

Ext Colour
Blue

History
NZ New

Seats
5 seats

CO2 Emissions
★ ★ ☆ ☆ ☆ ☆
238 grams/km

Energy Economy
★ ★ ☆ ☆ ☆ ☆
Annual fuel cost of \$3,640
9.2L per 100km

Cost per year is an estimate based on diesel price of \$2.00 per litre and an average distance of 14000 km. Includes Road User Charges (RUC). Emissions and Energy Economy figures standardised to 3P WLTP.

Stock ID: 27141