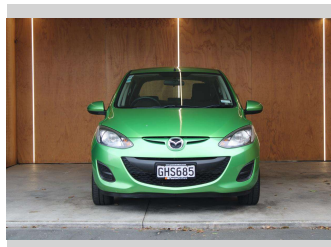
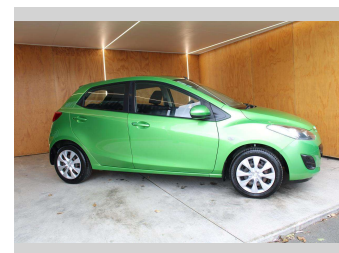



# 2012 Mazda Mazda2 1.5L, CLASSIC, AUTO



**Purchase Price** **\$5,990**  
Includes GST, Registration & Licensing

Finance may be available on this vehicle. Ask one of our friendly staff for more information.

Gain peace of mind with Mechanical Breakdown Insurance. **Ask us how.**



**Top features**  
None Listed

Body Style  
**Hatchback**

Odometer  
**148,166 km**

Engine  
**1498 cc, Internal Combustion**

Fuel Type  
**Petrol**

Transmission  
**Automatic**

Wheels  
-

VIN  
**JM0DE10Y2C0229713**

Interior  
-

Safety  


Based on 2023 UCSR rating for 07-14 models

Reg No.  
**GHS685**

Ext Colour  
**Green**

History  
**NZ New**

Seats  
**5 seats**

CO2 Emissions  
**★★★★☆**  
**181 grams/km**

Energy Economy  
**★★★☆☆**

**Annual fuel cost of \$2,980**  
**7.6L per 100km**

Cost per year is an estimate based on petrol price of \$2.80 per litre and an average distance of 14000 km. Emissions and Energy Economy figures standardised to 3P WLTP.

**Stock ID: 27271**