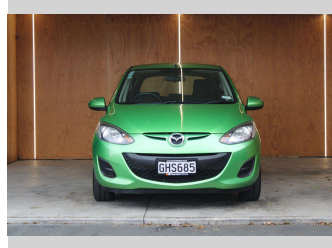
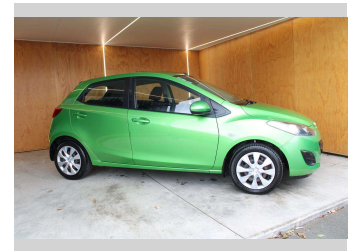
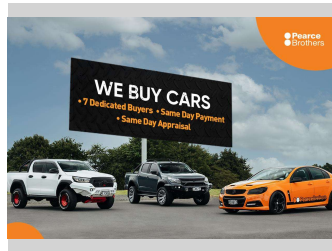




2012 Mazda 2 NZ NEW ECONOMICAL




Purchase Price **\$5,990**
Includes GST, Registration & Licensing

Finance may be available on this vehicle. Ask one of our friendly staff for more information.

Gain peace of mind with Mechanical Breakdown Insurance. **Ask us how.**



Top features
None Listed

Body Style
Hatchback

Odometer
148,166 km

Engine
1498 cc, Internal Combustion


Fuel Type
Petrol

Transmission
Automatic

Wheels
-

VIN
JM0DE10Y2C0229713

Interior
-

Safety

Based on 2023 UCSR rating for 07-14 models

Reg No.
GHS685

Ext Colour
Green

History
NZ New

Seats
5 seats

CO2 Emissions
★★★★☆
181 grams/km

Energy Economy
★★☆☆☆
Annual fuel cost of \$2,980
7.6L per 100km

Cost per year is an estimate based on petrol price of \$2.80 per litre and an average distance of 14000 km. Emissions and Energy Economy figures standardised to 3P WLTP.

Stock ID: 27271