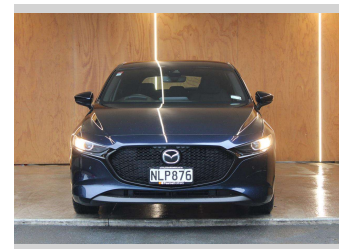
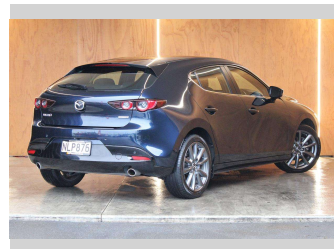
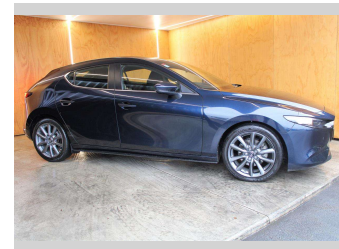
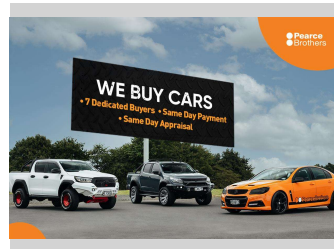
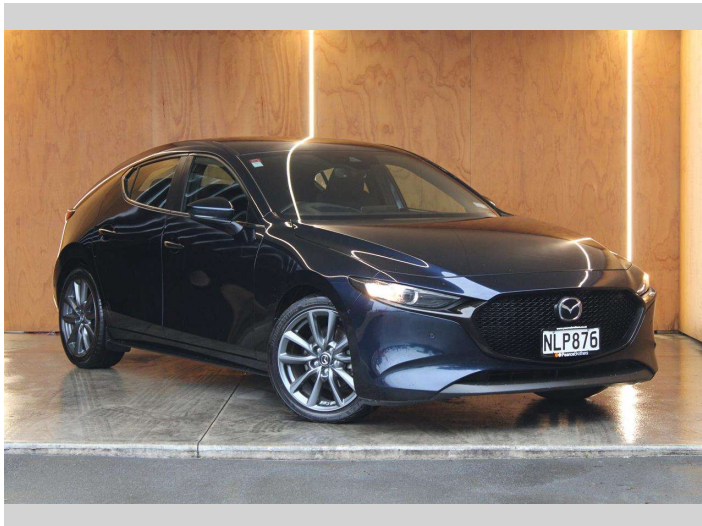



2021 Mazda 3 GTX 2.5L PETROL NZ NEW




Purchase Price **\$24,990**
Includes GST, Registration & Licensing

Finance may be available on this vehicle. Ask one of our friendly staff for more information.



Gain peace of mind with Mechanical Breakdown Insurance. **Ask us how.**



Top features
None Listed

Body Style
5 door, Hatchback

Odometer
63,226 km

Engine
2488 cc, Internal Combustion


Fuel Type
Petrol

Transmission
Automatic

Wheels
-

VIN
JM0BP2HLA01133332

Interior
-

Safety

Based on 2019 ANCAP rating for 19+ models

Reg No.
NLP876

Ext Colour
Blue

History
NZ New

Seats
5 seats

CO2 Emissions
★★★★☆
171 grams/km

Energy Economy
★★☆☆☆
Annual fuel cost of \$2,860
7.3L per 100km

Cost per year is an estimate based on petrol price of \$2.80 per litre and an average distance of 14000 km. Emissions and Energy Economy figures standardised to 3P WLTP.

Stock ID: 26579



Pearce Brothers | Phone 09 250 1987 | Email joel@pearcebrothers.co.nz
155 Cavendish Drive, Manukau, Auckland 2104, New Zealand
www.pearcebrothers.co.nz