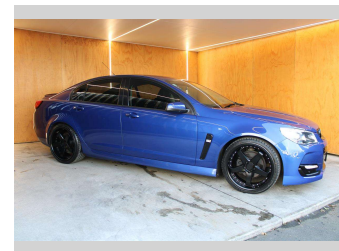
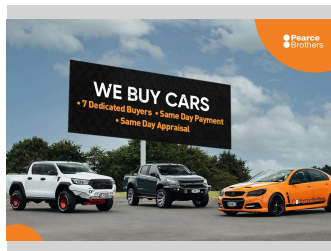



2015 Holden COMMODORE VF2 SV6, LWRD ON 20"




Purchase Price **\$22,990**
Includes GST, Registration & Licensing

Finance may be available on this vehicle. Ask one of our friendly staff for more information.



UDC
New Zealand's Finance Company
MARAC
MEANS FINANCE

Gain peace of mind with Mechanical Breakdown Insurance. **Ask us how.**



autosure
INSURANCE

Top features
None Listed

Body Style
4 door, Sedan

Odometer
123,163 km

Engine
3564 cc, Internal Combustion

Fuel Type
Petrol

Transmission
Automatic

Wheels
-

VIN
6G1FB5E31GL211118

Interior
-

Safety



Based on 2023 UCSR rating for 13-17 models

Reg No.
JNJ792

Ext Colour
Blue

History
NZ New

Seats
5 seats

CO2 Emissions
★ ★ ☆ ☆ ☆ ☆
241 grams/km

Energy Economy
★ ☆ ☆ ☆ ☆ ☆

**Annual fuel cost of \$3,920
10L per 100km**

Cost per year is an estimate based on petrol price of \$2.80 per litre and an average distance of 14000 km. Emissions and Energy Economy figures standardised to 3P WLTP.

Stock ID: 26867