

2014 Suzuki Swift SPORT



Pearce Brothers
THE EASY WAY TO FINANCE YOUR NEXT CAR

SUPER FAST AND COMPETITIVE

LOW OR NO DEPOSIT AVAILABLE

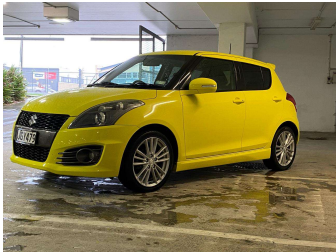
USE YOUR TRADE-IN AS A DEPOSIT

finance NOW

MARAC

UDC

WE USE ALL THE MAIN FINANCIERS AND BECAUSE WE'RE BIG THEY LOOK AFTER OUR CUSTOMERS WITH GREAT RATES AND FAST APPROVAL. CALL ONE OF OUR FRIENDLY TEAM NOW OR APPLY ONLINE.



Purchase Price

\$11,975

Includes GST, Registration & Licensing

Indicative repayments

\$53.10 per week*

Based on a 60 month term & 25% deposit.
Total repayments (260) = **\$16,798.55**

Gain peace of mind with Mechanical Breakdown Insurance. **Ask us how.**

Top features

None Listed

Body Style

5 door, Hatchback

Odometer

98,049 km

Engine

1600 cc, In-Line

Fuel Type

Petrol

Transmission

Automatic, Front Wheel

Wheels

-

VIN

7AT0GK0CX15303103

Interior

-

Safety

3 star safety rating

Based on 2024 UCSR rating for 11-17 models

Reg No.

JGY479

Ext Colour

YELLOW

History

Ex-Overseas, 7 owners

Seats

5 seats

CO2 Emissions

★★★★☆

169 grams/km

Energy Economy

★★☆☆☆

Annual fuel cost of \$2,820

7.2L per 100km

Cost per year is an estimate based on petrol price of \$2.80 per litre and an average distance of 14000 km. Emissions and Energy Economy figures standardised to 3P WLTP.

Stock ID: 35347



Pearce Brothers | Phone 09 267 7877 | Email sales@pearcebrothers.co.nz
314 Great South Road, Manurewa, Auckland 2102, New Zealand
www.pearcebrothers.co.nz

★★★★★

4.63 | 326 reviews

* Pearce Brothers is not a lender nor a financial adviser. Any amounts displayed should not be seen as an offer of finance or taken as financial advice. The interest rate, fees and loan term used in this calculation may not actually represent those available from lenders. Actual interest rates, fees and loan terms will vary per lender and are typically based on an assessment of your credit risk and responsible lending criteria. Any repayment amounts displayed are indicative only and have been calculated using several other indicative inputs. The interest rate used in this calculation is an arbitrary 14.95%, however exact interest rates vary per lender. The term of the loan used in this calculation is 60 month. Exact terms available vary per lender although options typically include 6, 12, 18, 24, 36, 48 and 60 months. This calculation also includes two typical mandatory fees charged by lenders. These are an account admin fee of \$1.80 per month (other payment frequencies may be available) and a one-off establishment fee of \$625.00. Typically, this fee can be paid upfront or, as in this calculation, be capitalised over the contract term, ie. included in the loan amount. These fees can vary per lender and other non-mandatory fees and charges may also apply. The total amount of repayments has been calculated by multiplying 260 weekly repayments (based on a 60 month term) by the weekly repayment amount of \$53.10 which equals \$16,798.55. This calculator does not consider any of your own personal circumstances and we strongly suggest you seek budgeting advice prior to committing to any loan contract. Responsible lending criteria and lender terms and conditions will likely apply to any finalised loan contract. Proof of security and/or vehicle insurance may also be required before proceeding.