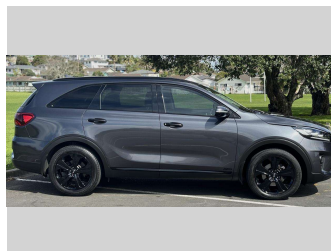


# 2019 Kia Sorento LTD 2.2TD 4WD



**Purchase Price** **\$29,975**  
Includes GST, Registration & Licensing

Finance may be available on this vehicle. Ask one of our friendly staff for more information.



Gain peace of mind with Mechanical Breakdown Insurance. **Ask us how.**



**Top features**

None Listed

Body Style  
**5 door, SUV**

Odometer  
**139,048 km**

Engine  
**2199 cc, In-Line**


Fuel Type  
**Diesel**

Transmission  
**Automatic, 4WD**

Wheels  
-

VIN  
**KNAPH81XSXX503XXX**

Interior  
-

Safety  
  
Based on 2024 VSRR rating

Reg No.  
-

Ext Colour  
**Grey**

History  
**NZ New**

Seats  
**7 seats**

CO2 Emissions  
**★★★★☆**  
**198 grams/km**


Energy Economy  
**★★★★☆**  
**Annual fuel cost of \$3,160**  
**7.5L per 100km**

Cost per year is an estimate based on diesel price of \$2.00 per litre and an average distance of 14000 km. Includes Road User Charges (RUC). Emissions and Energy Economy figures standardised to 3P WLTP.

**Stock ID: 34219**



Pearce Brothers | Phone 09 2777 335 | Email natalia@pearcebrothers.co.nz  
122 Great South Road, Papatoetoe, Auckland 2025, New Zealand  
www.pearcebrothers.co.nz



★★★★★  
4.70 | 1215 reviews