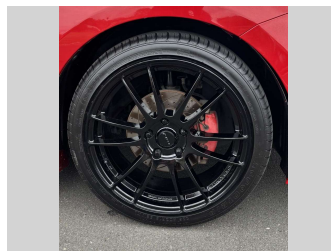
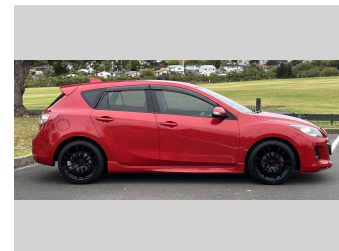



# 2013 Mazda Axela 2.0L, BLACK EDITION




**Purchase Price** **\$12,975**  
Includes GST, Registration & Licensing

Finance may be available on this vehicle. Ask one of our friendly staff for more information.



Gain peace of mind with Mechanical Breakdown Insurance. **Ask us how.**



**Top features**

None Listed

Body Style  
**5 door, Hatchback**

Odometer  
**95,974 km**

Engine  
**1990 cc, In-Line**

Fuel Type  
**Petrol**

Transmission  
**Automatic**

Wheels  
-

VIN  
**7AT0C1XXX22111XXX**

Interior  
**Charcoal**

Safety



Based on 2024 UCSR rating for 09-13 models

Reg No.  
-

Ext Colour  
**Red**

History  
**Ex-Overseas**

Seats  
**5 seats, Cloth**

CO2 Emissions  
**★★★★☆**  
**166 grams/km**

Energy Economy  
**★★★☆☆☆☆**

**Annual fuel cost of \$2,700**  
**6.9L per 100km**

Cost per year is an estimate based on petrol price of \$2.80 per litre and an average distance of 14000 km. Emissions and Energy Economy figures standardised to 3P WLTP.

**Stock ID: 35166**



Pearce Brothers | Phone 09 2777 335 | Email natalia@pearcebrothers.co.nz  
122 Great South Road, Papatoetoe, Auckland 2025, New Zealand  
www.pearcebrothers.co.nz

